

# COMBERTON CONTACT JULY/AUGUST 2022

## Church Fete 2022



**2pm - 4.30pm on Monday 29th August**  
**St Mary's Churchyard**

**Tea & Cake | Stalls | Children's Activities | Teddy Zipwire**

# USEFUL TELEPHONE NUMBERS

## COMBERTON SURGERY

58 Green End, Comberton, CB23 7DY

01223 262500

### Opening times Monday to Friday

Surgery 8:00 - 12:30 & 13:30 - 18:00

Dispensary 8:00 - 12:30 & 14:00 - 18:00

Prescriptions can be collected outside of opening hours by signing up to use our Pharmaself machine at Comberton (see website for details)

[www.combertonandeversdensurgery.nhs.uk](http://www.combertonandeversdensurgery.nhs.uk)

## EVERSDEN SURGERY

33 Harlton Road, Little Eversden, CB23 1HB

01223 262579

### Opening times Monday to Friday

Surgery 8:00 - 12:30 & 13:30 - 18:00

Dispensary 8:00 - 12:30 & 14:00 - 18:00

### Phones at both surgeries go to night service at 18:00

Repeat prescription requests will only be taken over the phone for housebound patients.

**BOURN SURGERY** 01954 719313

[bourn.surgery@nhs.net](mailto:bourn.surgery@nhs.net)

<b>Age Concern</b> Cambridge Information & Advice Line	<b>01354 696677</b>
<b>Apple Tree Dentist</b> 1-3 West Street, Comberton	<b>262838</b>
<b>Ash Croft Veterinary Surgery</b> 169 St Neots Rd, Hardwick	<b>01954 210250</b>
<b>Baptist Church</b> Church Office	<b>264707</b>
<b>Benefits Agency</b> Chesterton Road, Cambridge	<b>545200</b>
<b>Comberton Catholics</b> (Fr John Minh)	<b>832397</b>
<b>Comberton Library</b>	<b>0345 045 5225</b>
<b>Comberton Playgroup</b>	<b>262373</b>
<b>Comberton Village College</b>	<b>262503</b>
Adult Education	<b>264721</b>
<b>Cambridge Water</b>	<b>706050</b>
Emergencies	<b>403000</b>
Sewerage Emergencies	<b>0845 7145145</b>
<b>Environmental Health Services (South Cambs)</b>	<b>03450 450500</b>
<b>Meridian Primary School</b>	<b>262423</b>
<b>Nursery Way Sheltered Housing</b>	<b>264434</b>
<b>Parkside Police Station</b>	<b>01480 456111</b>
<b>Samaritans</b>	<b>364455</b>
<b>Social Services</b>	<b>264466</b>
(emergency out-of-hours)	<b>01733 561370</b>
<b>St Mary's Church (Vicar David Newton)</b>	<b>665654</b>
<b>Street Light Failure reporting helpline</b>	<b>01954 233330</b>
<b>Village Help Scheme</b> (Chairman Barbara Mitton),	<b>262073</b>
See panel on page 5 for transport bookings	
<b>Wood Green Animal Shelter</b>	<b>01480 830014</b>
Stray dogs (South Cambs DC)	<b>443000</b>

# Contents

Regular dates for your diary	4
Comberton Contact Team	4
Wheelie Bin Collection Dates	5
Village Help Scheme - Volunteer Drivers Schedule	5
Parish Council	5
Advertising Rates	5
From the Editor	6
Local Government Contacts	6
Comberton Village Website	6
Comberton Library	9
Comberton Village Hall	
Annual Supper & Entertainment	11
The Bats in St Mary's Churchyard	13
Comberton Twinning Association	15
Comberton Parish Council News	17
Comberton Greenway – Engagement Event	17
June Challenge Solution	19
Memories of 1977 Silver Jubilee celebration	23
Comberton Allotments & Gardens Association	25
St Mary's Churchyard	29
Comberton Friendship Club	31
Comberton Cinema	33
The Comberton Village Transport Help Scheme	33
July Challenge	35
Meridian Primary School	37
Comberton Village Hall Lettings Charges	38

## Regular dates for your diary

Day	Time	What	Where
Monday	Morning	Monday Studio	VH
Monday	9.45am - 11am	Comberton Walkers	BC
Monday	6pm - 7pm	Tang Soo Do Junior 6-11	MS
Monday	7pm - 9pm	Tang Soo Do	MS
1 <sup>st</sup> , 2 <sup>nd</sup> , 4 <sup>th</sup> Monday	7pm - 9pm	Carpet Bowls	VH
3 <sup>rd</sup> Monday	7pm - 9pm	Comberton Winemakers	VH
2 <sup>nd</sup> Tuesday (except Aug)		Comberton WI	
4 <sup>th</sup> Tuesday	8pm - 9:30pm	Comberton Antiquarian Society	VH
Wednesday	10am - 11:30am	Comberton Baby & Toddler Group	VH
Wednesday	5.15pm-6.15pm	Pilates Class - book via <a href="http://www.faybpilates.co.uk">www.faybpilates.co.uk</a>	MS
Wednesday	6.45pm-7.45pm	U15 Football Club	CVC
Wednesday	7pm - 9pm	Tang Soo Do	MS
2 <sup>nd</sup> Thursday	2.30pm	Comberton Friendship	VH
Thursday	5.45pm-6.45pm	U8 Football Club	CVC

VH = Village Hall                      CVC = Comberton Village College  
 BC = Baptist Church                MS = Meridian School  
 REC = Recreation Ground Car Park

### Comberton Contact Team

Editor and Designer                      James Gilbert                      07768 421049  
[editor@combertoncontact.org.uk](mailto:editor@combertoncontact.org.uk)  
 50 South Street, CB23 7DZ

Treasurer and Advertising            Terry Coad                      01223 263264  
[treasurer@combertoncontact.org.uk](mailto:treasurer@combertoncontact.org.uk)  
 38 Westlands

Distribution                                Marian Dymott                      01223 263292

Please supply copy via email in a plain text format and images in jpg, png or pdf with 300 dpi. Please send any submissions for the September magazine by 15th August 2022. Submissions will only be acknowledged if requested and this may take up to a week.



## Parish Council

For those of you who eagerly follow the Parish Council meetings, you will now know we are back to in person meetings and we are meeting at the village hall on on the 2nd Wednesday of each month, to discuss topics that affect our village, the facilities and services that our village offers.

We welcome public attendance and the agendas and minutes can be found at <http://parish-council.comberton.org/decisions/meetings/>

## Wheelie Bin Collection Dates

Wednesday 29 <sup>th</sup> June	Blue & Green
Wednesday 6 <sup>th</sup> & 20 <sup>th</sup> July	Black
Wednesday 13 <sup>th</sup> & 27 <sup>th</sup> July	Blue & Green
Wednesday 3 <sup>rd</sup> & 17 <sup>th</sup> August	Black
Wednesday 10 <sup>th</sup> & 24 <sup>th</sup> August	Blue & Green
Thursday 1 <sup>st</sup> September	Black



## Village Help Scheme - Volunteer Drivers Schedule

To book transport please see the dates below and call the appropriate number.

04 July	Joan Wells	01223 262746
11 July & 18 July	Barbara Mitton	01223 262073
25 July & 1 <sup>st</sup> Aug	Angela Donnelly	01223 263283
08 Aug & 15 Aug	Gill Redman	01223 262246
22 Aug & 29 Aug	Joan Wells	01223 262746

More drivers are **URGENTLY** needed for this essential service.

For more information contact Mrs Gill Redman on 01223 262246

## Advertising Rates

	Size (w x h)	Annual (10 editions)	Single Edition
<b>Whole page</b>	122mm x 183mm	£475	£60
<b>3/5 page</b>	122mm x 109mm	£285	£36
<b>2/5 page</b>	122mm x 72mm	£190	£24
<b>1/5 page</b>	122mm x 35mm	£95	£12
<b>1/5 page</b>	60mm x 72mm	£95	£12
<b>Back page (colour)</b>	122mm x 183mm	One-off only	£90

## From the Editor

It looks like everyone enjoyed the Comberton Celebration Festival - see the selection of pictures on the rear cover - and I'd like to offer a big thank you to the organisers for putting on the event. There are more pictures on the village website. The pictures in the last edition of the 1977 Jubilee in Comberton jogged some memories for Jean and Roger Abraham (see page 23).

As usual there is no magazine published in August, so the next edition will be out at the beginning of September. As always, please consider writing an article for the magazine - maybe you've completed a garden project, or have an unusual hobby that might appeal to others. Or maybe you will have enjoyed a new holiday experience over the summer.

Let us hope the good weather continues - it looks to be a bumper year for fruit at least in our garden, although as usual the squirrels will take all the walnuts.

James Gilbert      07768 421049      [editor@combertoncontact.org.uk](mailto:editor@combertoncontact.org.uk)

## Comberton Village Website

Regular updates are available at [www.comberton.org](http://www.comberton.org)

## Local Government Contacts

Parish Council Chair	Mr Tim Scott	01223 263434
	Moat House, 65 Green End	
	<a href="mailto:tscott@comberton.org">tscott@comberton.org</a>	
Parish Council Clerk	Angela Bridges	07735 908030
	<a href="mailto:parishclerk@comberton.org">parishclerk@comberton.org</a>	
	Comberton Parish Council,	
	PO Box 300, Royston SG8 1GA	
District Councillors	Ariel Cahn	01223 232186
	<a href="mailto:cllr.cahna@scambs.gov.uk">cllr.cahna@scambs.gov.uk</a>	
	Dr Lisa Redrup	07855 324580
	<a href="mailto:cllr.redrupl@scambs.gov.uk">cllr.redrupl@scambs.gov.uk</a>	
County Councillor	Michael Atkins	07968 264637
	<a href="mailto:michael.atkins@cambridgeshire.gov.uk">michael.atkins@cambridgeshire.gov.uk</a>	

# The Parish Church of St Mary, Comberton

In the Lordsbridge Team Ministry



## July



### Activities

10th July at 3pm - **Wild Church**

Friday Thurs 28th July at 2.30pm - **Oasis Tea** in Village Hall

### Regular Services in St Mary's Church

3rd July at 9.30am - **Holy Communion**

10th July at 8.00 am - **BCP Holy Communion**

at 9.30am - **Morning Worship**

17th July at 9.30am - **Holy Communion**

24th July at 8.00am - **BCP Holy Communion**

at 9.30am - **Informal Morning Worship**



### Lordsbridge Team Services

31st July at 8.30am - **Team BCP Holy Communion** at St Andrew's Church, Toft

at 10.30am - **Team Holy Communion** at St Peter's Church, Barton

### On-line Services

Zoom Church at 11am each Sunday.

Use this link : <https://zoom.us/j/82311473640>

Or, you can go straight to the zoom website and simply put the meeting ID

**823 1147 3640** in the 'join meeting' box.



### The Rev'd Chris Westgarth

Will be ordained priest in Ely Cathedral at **5pm on Sunday 2nd July**. There will be a bring and share lunch after the service (12noon) on Sunday to celebrate.

### The Rev'd David Newton

Has been appointed as the Team Rector of the Lordsbridge Team, overseeing the ministry and collaboration of churches across the team. He will remain as the vicar of Comberton.

His installation service will be at St Mary's on **Friday 15th July at 7.30pm**. All are welcome. Drinks and Nibbles will follow.

# HomeTechWorks

"helping you make the most of your digital home technology"



Need help with your computer?  
Or advice on a new one?



Does your phone or tablet work  
as well as it should?



Want better Wifi signal  
throughout your house?



Would you like all your photos  
organised and backed up?

Call or email Dan for a no obligation chat.  
No job too small. Testimonials online. **NOTE new phone no.**



[www.hometechworks.co.uk](http://www.hometechworks.co.uk)

01223 977019

[enquiry@hometechworks.co.uk](mailto:enquiry@hometechworks.co.uk)



## Cambridge Appliance Repairs

**ARE YOU HAVING PROBLEMS WITH YOUR APPLIANCES?**

Looking after your appliances should be just as important as  
looking after your car, house or mobile phone

We have over 35 years' experience providing a professional  
domestic and commercial appliance repair service.

**Telephone 01223 426222**

## MELBOURN FLOORING AND INTERIORS LIMITED

Phillimore Garden Centre, Cambridge Rd., Melbourn, SG8 6EY

Tel :01763 262413

### FLOORING

- Vast Range of Carpets from all leading manufacturers
- Real Wood, Laminates, Vinyl's, Karndean, Amtico and Project Floors
- Safety Flooring
- Free Estimates. Fitting by experienced staff

Visit our **LARGE SHOWROOM** with Ample Free Parking

9 to 5, Monday to Friday, 9 to 4 Saturday

**OR**

Call the number above to speak to one of our friendly staff

# Comberton Library

[www.cambridgeshire.gov.uk/library](http://www.cambridgeshire.gov.uk/library) [your.library@cambridgeshire.gov.uk](mailto:your.library@cambridgeshire.gov.uk)

Tel: 0345 045 5225

Opening hours:

Monday: 10:00 am – 1:00 pm

Wednesday: 10:00 am – 1:00 pm and 2:30 pm – 5:30 pm

Friday: 2:30 pm – 5:30 pm

Saturday: 10:00 am – 1:00 pm

We are delighted to announce that Comberton Library has restarted rhymetime. The sessions run every other Monday during term time from 10:30 – 11am. Sessions running up to the summer break are: 4th July and 18th July; please do come and join us for a lovely half hour of rhymes and stories.

Get ready for the Gadgeteers Summer Reading Challenge. Join the Gadgeteers to discover the amazing science and technology behind the world around you! Read amazing books, collect awesome scrap & sniff stickers. Complete the Challenge and claim your own special Gadgeteers Medal and Certificate. Sign up for free at your local library from Saturday 9th July.

Alongside the reading challenge will also be holding two events during the summer holidays Monday 1st August for Lego & Monday 15th August for crafts the events will run from 10:30 – 12:00 keep a look out at the library for more details nearer the time.

The Cambridgeshire Library service has just become the proud owner of two book bikes. If you are in Cambourne between 15th to 29th August you might be lucky enough to see Jessie the Jubilee bike. Jessie has mainly children's books, crafty materials and dressing up clothes for children. Our other bike Bessie will also be out and about over the summer visiting fetes and festivals, schools, playgroups, days centres, etc.

Bookings are open for the Spring/Summer Library Presents events and there are some great events to choose from: <https://www.library.live/the-library-presents-events>

Is your Bus Pass due to expire soon or are you newly eligible? If you or someone you know needs help renewing or applying for their pass we can assist them at the library, you can renew your pass up to six weeks before it expires. Please contact us at: [your.library@cambridgeshire.gov.uk](mailto:your.library@cambridgeshire.gov.uk) or call 0345 045 5225 to book an appointment. You are also welcome to just drop in, for renewals all you need to bring is your current bus pass.

## OAP Skips - cheap skip hire!



Based in Dry Drayton but we  
cover Bedfordshire,  
Cambridgeshire & Hertfordshire.  
Quick turnaround.

One size only (4 yard) £150 per skip  
Call Gary today on 07706 032544

## Rothwell's Carpet Cleaning

### Carpet Cleaning Upholstery & Rug Cleaning

*A few points that make us stand out:*

In business since 1993

We're an honest local family firm  
Our large truck mounted machines  
mean more cleaning & drying power  
for the best results possible.

We will move the furniture.  
100% satisfaction or it's FREE.

*Call Oliver and Max Campbell*

**01223 832 928 [www.Rothwells.biz](http://www.Rothwells.biz)**

## DAVID TURNER LEGAL SERVICES



Making or Updating  
your Will



Lasting Powers  
of Attorney



Probate & Estate  
Administration



Court of  
Protection



We have been advising clients for over 30 years and pride ourselves on our friendly personal approach whilst providing an efficient and professional service.

If we can be of help, do call in to see us. If you prefer, home visits can easily be arranged.



The Commercial Centre  
6a Green End, Comberton  
CB23 7DY



**01223 264 187**



**[david@dtlegalservices.co.uk](mailto:david@dtlegalservices.co.uk)**

# Comberton Village Hall Annual Supper & Entertainment

After a 2 year break due to covid, this year the supper will be held on Friday 22nd July in the Village Hall.

If you or your partner are aged 65 years or over and have not received an invitation by 8th July but would like to join us, please contact Marian Dymott for further details.

Telephone No. C263292 or 26 Barrons Way, Comberton,  
Cambridge CB23 7EQ

(subject to availability of places)

The event is sponsored by the Trustees of Comberton Village Hall



Oasis Holiday Club  
Tue 30th Aug  
10am - 4.30pm

Booking: 07967 500134, oasis@c-b-c.org.uk,  
www.c-b-c.org.uk/oasis

COMBERTON BAPTIST CHURCH  
CHAT | CRAFT | QUIZ | LUNCH | CREAM TEA | MORE

Organised by St. Marys, Comberton Baptist & the Catholic Community



Oasis Tea  
28 July - 2.30pm

COMBERTON VILLAGE HALL  
TEA | CAKE | CHAT | QUIZ | MUSIC | MORE

Organised by St. Marys, Comberton Baptist & the Catholic Community

## E D G E

COMMUNITY YOUTH CLUB

THURSDAYS. 4PM TO 6PM.  
COMBERTON BAPTIST CHURCH.



## Domestic Oil Fired Heating Services

**\*Annual Oil Boiler Servicing \*Boiler Breakdown Repairs**

**\*Oil Tank Replacements \*Landlord Certificates**

**\*Service & Repair of Most AGA Cookers**

**\*Family Business With More Than 45 Years Experience**

# 01223 207901

**info@bartonoilburnerservices.co.uk**

BROADWAY HOUSE, 149-151 ST NEOTS ROAD, HARDWICK. CB23 7QJ



## BRIAR SECURITY SYSTEMS LTD

- Intruder Alarm Systems
- CCTV
- Access control
- Locks, grilles & safes
- Automated Gates
- 24/7 callout 365 days a year
- Free Survey



Nixon's Hall, 1 Chapel Road, Gt Eversden, Cambridge CB23 1HP

T:01223 262728 F:01223 263349

email: sales@briarsecurity.co.uk      www.briarsecurity.co.uk

## A G ELECTRICAL

Little Evesdan

For all your electrical needs  
Portable Appliance Testing

Domestic Commercial  
Digital TV Aerials

No job too small

**Tel: 01223 262 607**

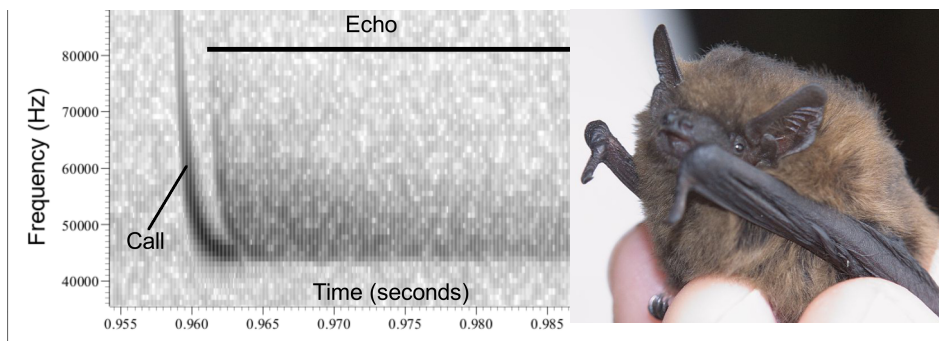
**Mobile: 07980486 935**

ag.electrical01@gmail.com



# The Bats in St Mary's Churchyard

Bats are fascinating. And what nicer place to study them than a country churchyard? In this elegiac frame of mind, I set off to St Mary's churchyard at twilight with an ultrasound microphone and a Raspberry Pi computer.



There were bat calls a-plenty. Calls are a useful means of identification and those recorded were typical of common pipistrelles (photo above\*). Their foraging call is effectively a whistle, sweeping from a high to a low frequency in about 1/300th of a second. The record here is a convenient way of displaying the call, by plotting frequency in cycles per second (Hz) against time. Each call can provide a lot of information and calls are repeated about 10 times a second. The plot shows the call, shaped like a hockey stick, and also the echo, reflected from various surrounding objects. The echo here contains a recognisable copy of the call, probably reflected from something large like a tree or a wall, followed by a more diffuse signal, from many objects at different distances and giving a sound-picture of the environment.

Common pipistrelles are said, under natural conditions but not in captivity, to produce calls at a constant frequency. I wonder why? A constant frequency call is used by some bat species to continuously monitor their closing speed on prey, according to changes in the frequency of the echo. Could the common pipistrelle be evolving a better sonar? It's worth a closer look and possibly the Friends of St Mary's will be able to help.

Brian McCabe ([bjm1@cam.ac.uk](mailto:bjm1@cam.ac.uk)), for the Friends of St Mary's Church

\*photo credit: <https://commons.wikimedia.org/w/index.php?curid=8802172>

## JASON KIRBY

*Professional Painting  
& Decorating Ltd*

*A Professional Service  
from Start to Finish*

*Tel: 01954 211775  
www.jasonkirbyltd.co.uk*



# A.G motors



Aaron Ginn Proprietor

MOTs

Diagnostics

Repairs

Air Conditioning Servicing

Courtesy Car Available

Servicing

(Free Car Collection & Delivery)

Tyres

Unit C2 Atria Court

Papworth Everard

Papworth Business Park

Cambridge

CB23 3GY

**01480 831 807**

www.agmotors.net

contact@agmotors.net

## **STEAMROLLER IRONING SERVICE**



Free pickup and delivery

**Price 1 lb = £1.50 (min £10.00)**

Non-smoking environment

**07742 319631 / 01954 210672**



## HARVEY

### PLUMBING & HEATING

- Oil boiler service / repair / install
- Central heating systems
- Power flushing
- Hot water cylinders
- Bathrooms & showers
- General plumbing

Call Darren

01223 262676

07947232543

# Comberton Twinning Association



On 27 May the Twinning Association was pleased to welcome friends from our twin village of Le Vaudreuil again, after two years of Covid restrictions. The 11 French families spent the Friday in London before arriving in Comberton in time for supper with their hosts.

Entertaining the visitors on the Saturday was easy, as they and their hosts explored the delights of Cambridge, Ely or Saffron Walden. In the evening everyone met for a BBQ in the charming garden of Manor Farm, which was a truly memorable social event. One highlight was a surprise performance by all the French of a song "Beautiful Comberton" to the tune of "Yellow Submarine"!

On Sunday morning there was time to walk round the village, to indulge in tea and biscuits in another lovely garden and to eat brunch with hosts, before it was time to say Au Revoir.

We are planning a return trip to France for the weekend of September 23-25. Would you like to join us? Speaking French is not vital!

For more information, see <http://CombertonTwinning.org.uk>. Or contact Glynis Ellis, tel 262214, email [secretary@combertontwinning.org.uk](mailto:secretary@combertontwinning.org.uk).

*Paul Hardy, Chairman of Comberton Twinning Association, June 2022*





Better Home Care works with customers and their families who require care in their own homes

We build personalised packages around your homecare needs

Better Home Care is registered and regulated by the CQC (Care Quality Commission) and currently rated as "GOOD" all-round. We have also been nominated for the 2020 Great British Care Awards Regional round in the East of England.

Recruitment - We are currently looking for local care workers to cover Comberton and the surrounding Villages.

Please get in touch - 01223 262669 (Fax 01223 262 670)  
info@betterhomecare.co.uk  
Barnwell House, Barnwell Drive, Cambridge, CB5 8UU

## Professional Exterior Cleaners

10+ years experience, just moved to Comberton village

Windows - Gutters - Conservatory Roofs - Solar Panels

Call or text for a free quote. All jobs big and small



cleanitcambridge.com

07918 398 135

- Text reminders before we come
- Pay by cash, card or online
- Guaranteed to be clean
- Friendly and Local
- Fully insured





## COMBERTON PARISH COUNCIL NEWS

The Parish Council reformed after the May local elections and elected a new Chairman, Cllr Tim Scott and Vice Chairman, Cllr Jen Martin.

All other councillor details are on the website - [Parish-Council.Comberton.org](http://Parish-Council.Comberton.org)

### C2C – Cambourne to Cambridge project

Greater Cambridge Partnership gave a presentation at the June Parish Council meeting discussing the prospective new transport link between the city and Cambourne. This aims to encourage public transport and councillors asked how this may affect Comberton and the surrounding area. Residents are encouraged to share their views in the public consultation which can be found here:

<https://consultcambis.uk.engagementhq.com/c2c-eia-2022>

### Village pond

The pond working group have been working hard gaining quotes to remove the central island, remove the silt and dig the pond deeper to allow for more water. The working group have been advised by professionals that it may not be necessary or even advisable to line the pond at this stage, which has delayed the job specification and subsequent quotes. The Parish Council aim for work to be undertaken before the winter, to improve the appearance and ecological value of the pond.

## Comberton Greenway – Engagement Event

During July the Greater Cambridge Partnership (GCP) will be undertaking public engagement on the Comberton Greenway, to share the latest designs and seek feedback on these.

This will be a combination of in-person and virtual forums. The planned in-person drop in event for the Comberton Greenway will be at **Comberton Village Hall, Friday 8th July, 2-7pm.**

The engagement will be further publicised and promoted closer to the time, including details of the online options to get involved too.





## **JASON MOORE** **CARPENTRY & BUILDING Ltd**

Extensions, Loft Conversions, New Build,  
UPVC Fascia/Soffits, UPVC Windows/Doors, Kitchens,  
Flooring, Fitted Wardrobes, Flat Roof Replacements

*Free estimates*

Call for a friendly and reliable service

Tel: **01223 977583** Mobile: **07939 244453**

E-mail: [jmoorecarpentry@sky.com](mailto:jmoorecarpentry@sky.com)

Green End, Comberton, Cambs



All aspects of Carpentry & Building  
with over 25 years experience  
City and Guilds qualified, full public liability insurance cover



## **SAUNDERS LANDSCAPES**

*Landscape design and construction*

Established for over 25 years, Saunders Landscapes offers  
you a variety of specialist landscaping services in and around  
Cambridge and the Cambridgeshire area.

Driveways and Paving • Gardens and Patios • Timber Decking • Walls and fencing

For a **free no obligation quote** or if you need advice and consultation.  
Whatever your requirements, contact Saunders Landscapes today.

01954 211559/ 07774 127416  
[www.saunderslandscapes.co.uk](http://www.saunderslandscapes.co.uk)

## **C & C BLINDS**

SPECIALISTS IN BLINDS ANY SIZE ANY COLOUR

VERTICAL BLINDS / ROLLER BLINDS / VENETIAN BLINDS / REPAIRS

ROMAN BLINDS / VELUX BLINDS / AWNINGS

FREE ESTINATES

Tel: 01223 211171 Mobile: 07761 262070

# June Challenge Solution

## PLATINUM - a test of your “mettle”

1. Who discovered Platinum ? ( His name is an anagram of classic Jaguar leisure).

JULIUS CAESAR SCALIGER

2. What are the six metals which form the platinum group ?

PLATINUM PALLADIUM RHODIUM RUTHENIUM IRIDIUM OSMIUM

3. Which of the six is the densest metal in the world ?

OSMIUM

4. Which of the six is the most valuable ?

RHODIUM ( in the region of £15,000 per troy ounce)

5. What is the total of the atomic numbers of the six ?

366

6. What is /was PLATIGNUM.

A PEN COMPANY

7. Believe it or not it is possible to construct 206 words of between 2 and 7 letters from those in PLATINUM. Don't panic, all I require is a mere 20 of those containing either 4 or 5 letters

A selection being:

PLAN PLANT PLUM LATIN PAIL TAIL TIN LUPIN PAINT NAIL AUNT  
PUMA MAIN TAMP LIMP PINT LINT MAUL TUNA PLAIN PAIN MALT  
UNTIL PLAIT LUMP LAMP PUNT PANT TUNA ULNA UNIT MINT PALM  
LIMA NIPA PILAU

Please note that both Julius Caesar Scaliger and Antonio de Ulloa were both accepted as answers to Question 1. See article in next edition of Contact.

The winner is **Dennis Coe** of Westlands.



Call Stuart Tunstall for  
Bespoke Cupboards & Shelving,  
Carpentry, Joinery,  
Painting & Decorating,  
Plastering, Tiling and much more...

For a free estimate  
tel 01223 263664 / 07957 101814  
or email [stuarttunstall@gmail.com](mailto:stuarttunstall@gmail.com)

RedLocks  
Locksmiths



**Your Local Independent Locksmith**

\* Fast & friendly reliable service \* Police-vetted  
\* No hidden extras \* FREE quotes  
\* Emergency locksmith \* No call out fee  
All worked guaranteed

**SERVICING CAMBRIDGE AND SURROUNDING AREAS**

Available 24 hours a day - Student & OAP discount

freephone\_ 0800 8 247 047 t\_ 01954 202818  
m\_ 07784 240 970 w\_ [www.redlocks.co.uk](http://www.redlocks.co.uk) e\_ [info@redlocks.co.uk](mailto:info@redlocks.co.uk)



Caring iz sharing

Caring comes easy

**BASED IN COMBERTON**  
**Caring Iz Sharing Ltd**  
**HOME CARE SERVICE**  
**WE ARE PROUD TO OFFER A**  
**RANGE OF FLEXIBLE CARE**  
**PACKAGES.**

Designed to provide our clients with carefully designed support to meet their individual needs. A commitment to our key values (compassion, dependability and positivity) means clients can look forward to a secure future in their own homes.

**CONTACT DETAILS**

[caringizsharing@gmail.com](mailto:caringizsharing@gmail.com) 0787 2654 293

**S E DAVEY PLASTERING**

**Plastering, Floor screeding & Coving**

TEL: 01954210941- MOB: 07711541799

[sedaveyplastering@outlook.com](mailto:sedaveyplastering@outlook.com)





## **COMBERTON CRUSADERS FOOTBALL CLUB**

**We are a well-established youth football club with  
12 competing teams and 200 members from  
Comberton and surrounding villages.**

**Our volunteers are committed to inspire all children  
in our community to lead active lives through  
grassroot football. For us to continue to do this:**

**We need new VOLUNTEERS to take  
vacant admin seats or shadow &  
replace committee members who  
will retire at the end of 2022-23.**

**Please contact Sam Nash Club Secretary on 07903 705966 or email  
[clubsecretaryccfc@aol.com](mailto:clubsecretaryccfc@aol.com) for more info.**

**Follow us on [facebook](#) @combertoncrusadersfc**

## **BLADES FENCING & GARDEN SERVICES**

ALL WOODEN FENCING INCL  
NEW/ REPLACEMENT/ REPAIRS/  
PRESERVATIVES  
HEDGE CUTTING & REDUCTION/  
REMOVAL  
SHRUB-SHAPING-REDUCTION-  
REMOVAL  
JET WASHING OF PAVING

Licensed Chemical Weed & Pest  
Control Operatives  
Registered waste carrier & Full Public  
Liability Insurance

[www.bladesgardenservices.co.uk](http://www.bladesgardenservices.co.uk)  
[andy@bladesgardenservices.co.uk](mailto:andy@bladesgardenservices.co.uk)  
Tel: Mobile 07939 114337

**Computer  
Maintenance**

**Selecting and  
Installing a Computer**

**Repairs**

**Advice on Installing  
Home Networks**

**Fault Finding**

**For help, call me, Brian Girling,  
on 01223 208529 (Wimpole)**

**E-mail [bg@moncraft.co.uk](mailto:bg@moncraft.co.uk)**

## **MOBILITY EQUIPMENT**

SCOOTERS, WHEELCHAIRS, RISER/RECLINER CHAIRS, BEDS, WALKERS, FOOTWEAR,  
TOILET & BATHING AIDS, KITCHEN & HOUSEHOLD AIDS, CONTINENCE CARE,  
CUSHIONS, STAIRLIFTS AND MUCH MORE

**HOME VISITS AVAILABLE  
EQUIPMENT HIRE, SERVICING AND REPAIR  
FRIENDLY AND CONSIDERATE SERVICE GUARANTEED**



**Orchard**  
mobility centre

**Scotsdales Garden Centre  
Horningsea, Cambridge  
CB25 9JG**

**Tel: 01223 863908  
[www.orchardmobility.co.uk](http://www.orchardmobility.co.uk)  
Monday to Saturday 9 am - 5 pm**

## **Cambourne Self Storage 01767 676189**

**24 Hour Access 7 Days a Week 365 Days a Year  
24 Hour Remotely Monitored CCTV—Sensor Flood Lighting  
Keypad Entry & High Security Locks  
Vehicle Access Directly to Unit Doors**

**[www.CambourneSelfStorage.co.uk](http://www.CambourneSelfStorage.co.uk)**

## Studio Apartment To Let In Comberton

Independent annex with bedroom, sitting room, dining room, bathroom with shower and fully equipped kitchen.

£950 pcm including internet, central heating and electricity

Call Ruth on 07765 365025



## Memories of 1977 Silver Jubilee celebration

It was a wonderful fun packed celebration day, with all the villagers taking part and each child receiving a commemoration silver coin .

Percy Prior a local farmer was driving his tractor and trailer from the Three Horseshoes PH to the recreation ground , with the children in their fancy dress costumes .

Our two sons Lee and Glenn Abraham are in the picture with the flag, sadly I cannot remember the other two children . Lee won 1st prize as the first spaceman to Toft and Glenn entered as a 1966 World Cup winner.

Thanks for the memories

Jean & Roger Abraham

# **Oakes and Watson Tree Surgery and Consultancy and Peter Oakes and Daughter Tree Surgery**



Due to my father semi retiring in October 2017 my husband and I have continued the business that he set up some 25 years ago by combining it with our own.

It is a pleasure and an honour to continue to offer top quality tree care in and around the area where my husband and I both grew up.

## **ARBORICULTURE AT ITS BEST.**

At Oakes and Watson we pride ourselves in providing professional, competent and complete services in all aspects of tree surgery and care. We have 19 years experience in top quality.

Tree care at extremely competitive prices.

Here at Oakes and Watson we believe that experience and qualifications come hand in hand so we are fully qualified, competent and insured in the job we both love.



## **Oakes and Watson**

Cert ab L2, DIP Arb L4 (ABC), TechArborA, CS Certified

### **Our Services**

All Aspects of Tree Surgery undertaken  
Tree Removal, Crown Raising, Reductions, Cable  
Installation, Pollards, Hedge Cutting, Topping,  
Tree Planting, Thinning, Tree Reports/  
Inspections, Fencing, Formative pruning

**Woodchips and Logs always available.**

01353 968287 [www.oakesandwatson.com](http://www.oakesandwatson.com)

07885377682 [arb@oakesandwatson.com](mailto:arb@oakesandwatson.com)

# Comberton Allotments & Gardens Association

## **BBQ: Saturday 23rd July (note change of date) 6pm 'till late**

Our Summer Barbecue is held on the Long Road allotment site.

Numbers are limited to 40 and tickets will be £5.

For full details or to reserve your place email:

[quin.hollick@dsl.pipex.com](mailto:quin.hollick@dsl.pipex.com) (phone 264410) or [lucybrady@hotmail.com](mailto:lucybrady@hotmail.com)

**Plant Sale:** The May event was a great success and we thank all those who donated plants to and purchased plants from the sale, we hope they all grow on successfully; the profits will help to subsidise the Autumn Show. Our surplus stock was donated to be sold on behalf of St Mary's Church.

**Best Kept Allotment:** A reminder that the competition this year will be judged on the South Street allotment plots only and we anticipate this will take place during July.

## **Autumn Show: Saturday 17th September in the Meridian School**

By the time the next issue of Contact comes through your door the Autumn Show will be almost upon us. Last year we introduced free entry for all exhibits with the option of submitting your entry by email; this worked well and we will be doing the same this year. This does mean that there will be no monetary prizes just certificates and trophies for the winners and runners up. We will publish and distribute the schedule during the summer detailing the classes and entry details in good time for the event.

So whilst you are out and about this summer think about pictures for the Photography classes; the subjects are:-

*'Tree Bark' or 'Seen through an Arch' or 'Quiet Reflection';* the childrens' class subject is *'Red, White, Blue'*. As always we encourage a broad interpretation of the subjects.

Robin Worship (CA&GA secretary) [robin.worship7@gmail.com](mailto:robin.worship7@gmail.com)





# FOXCOTTE

## SERVICES



### SHOP

Open to trade and public, our shop is packed to the rafters with everything needed for the DIY enthusiast. We stock a range of well known brands, such as Stanley, Irwin, Ox, Hozelock, and Faithfull, and have over 25,000 products available for next day collection.

01223 263 702

[info@foxcottefencing.co.uk](mailto:info@foxcottefencing.co.uk)

[foxcottecambridge.com](http://foxcottecambridge.com)

### LANDSCAPING AND FENCING

Our landscapers offer a diverse range of skills and a high quality, professional service.

01223 263 702

[landscaping@foxcottefencing.co.uk](mailto:landscaping@foxcottefencing.co.uk)

[foxcottecambridge.com](http://foxcottecambridge.com)

### TREE SURGERY

We offer a range of services including domestic and commercial tree surgery jobs. This includes tree removal, reductions, pollards, topping, thinning, formative pruning, crown raising, support cable installation, hedge cutting, hedge laying, tree planting, health and safety tree reports and tree inspections.

07445 380 604

[trees@foxcottefencing.com](mailto:trees@foxcottefencing.com)

[foxcottecambridge.com](http://foxcottecambridge.com)

### TIMBER YARD

Open to trade and public, we stock a full range of landscaping products, as well as an ever increasing choice of building supplies, including loose and bagged aggregates at the lowest prices around.

01223 263 702

[info@foxcottefencing.co.uk](mailto:info@foxcottefencing.co.uk)

[foxcottecambridge.com](http://foxcottecambridge.com)

### GARDEN MACHINERY SALES AND SERVICES

We service all types of garden machinery, and sell Echo, Ego, and Kress Robotic machines. We are also stockists of Aspen fuel, chainsaw oils and Bahco hand tools.

01223 870 889

[mowerservices@foxcottefencing.co.uk](mailto:mowerservices@foxcottefencing.co.uk)

[foxcottecambridge.com](http://foxcottecambridge.com)

### WONDERWOOD WILLOW

We are the makers of bespoke woven willow fencing and garden architecture. We offer a wide range of hand woven willow products including continuous woven fencing, oak framed woven willow panels and gates, oil tank and wheelie bin screens and privacy extensions.

07834 275 142

[lcarter@wonderwoodwillow.com](mailto:lcarter@wonderwoodwillow.com)

[wonderwoodwillow.com](http://wonderwoodwillow.com)

**OPENING HOURS** Monday-Friday 7.30am-5pm Saturday 8am-1pm

Foxcotte Fencing Ltd, Foxcotte Farm, Comberton Road, Barton, Cambridge CB23 7BA.





Comberton Village College  
West Street  
Comberton  
Cambridgeshire  
CB23 7DU

Tel: 01223 262503  
Email: [personnel@combertonvc.org](mailto:personnel@combertonvc.org)  
Website: [www.combertonvc.org](http://www.combertonvc.org)

**Teaching Assistant  
Permanent  
To start September 2022**  
Term time only

Salary: Scale TA1b – Scale Range 3-4  
FTE salary: £18,887 - £19,264 (52 weeks)

**Working hours: 08:50 - 14:50 (with an unpaid mid morning and lunch break)**

**Depending upon the department, there is also some requirement to attend paid professional days and/or a paid fortnightly training meeting**

Actual starting salary: £12,053.04 pa (based on 25 hours worked, 38 weeks per year and includes holiday pay)

We are seeking skilled and enthusiastic individuals to join our hard-working team of professionals who dedicate themselves to enabling our students to cope in a mainstream setting and feel safe to prosper academically and socially both now and in the future.

The successful candidate will:

- Have an approachable and patient nature;
- be positive, proactive and professional;
- have excellent interpersonal skills and emotional intelligence;
- be able to liaise confidently with staff and students;
- have a minimum of 5 GCSE grade 4/C including English and Maths;
- be energetic and have an interest in working with SEN children / young pupils; and
- for sixth form roles must have at least A levels or an equivalent level qualification.

The position could provide valuable experience for those wishing to enter the teaching profession. It would also be ideal for a school leaver before University or for a parent who is wishing to return to work.

How to apply:

Please complete and return the Support Staff Application form located on our website [www.combertonvc.org/contact-us/current-vacancies](http://www.combertonvc.org/contact-us/current-vacancies). Your application should be supported by a letter of application (consisting of no more than 2 sides of A4 printed) which explains the reason for your interest, whether you are interested in main school or sixth form and your relevant track record that confirms you could fulfil the expectations of the role

Applications should be submitted to: HR Manager on [personnel@combertonvc.org](mailto:personnel@combertonvc.org) as soon as possible but no later than 9.00am on Friday, 1 July 2022. Interviews will be held soon after.

Please note that we do not accept applications by CV. The Cam Academy Trust is committed to safeguarding and promoting the welfare of children and young people and expects all staff and volunteers to share this commitment. Successful candidates will be subject to an enhanced DBS check, barred list check and a medical questionnaire.

**Interested in joining the Gym?**  
**Sign up for Comberton Sports & Arts**  
**'Great Value Gym Memberships!'**

**Memberships include:** (NO CONTRACTS) - **NO JOINING FEE** - Easy to join!

- Fitness Suite & Free Weights access
- Excellent Studio Timetable Classes
- Free Badminton Court Hire
- Free Induction and advice from friendly qualified gym instructors

**STRICT COVID SAFE  
MEASURES APPLIED**

**Standard Rate: £30 per month (DD) or £300 per annum**

**Concession Rate: £20 per month (DD) or £200 per annum**

- Students, Over 60s, NHS, Armed Forces, The Cam Academy Trust employees

**Give try before you buy - Non members welcome**

- **Fitness Suite & Free Weights** - Pay & Play: £6.50 or £5 per concession
- **Studio Classes** : £5 per class or block card (Buy 12 for the price of 10)
- **Badminton court hire** : £10 per court per hour

**Website : [www.combertonsa.org](http://www.combertonsa.org) or Please call : 01223 264444**



**BOOK  
FITNESS CLASSES  
ONLINE**



**Home Meadow Care Home**  
**Comberton Road, Toft, CB23 2RY**

Home Meadow offers the highest standards of residential and dementia care, where dignity is respected, interests are encouraged, and where life is lived to its fullest potential. Our experienced care team always put residents' wellbeing at the heart of everything they do.

Warm and homely with a great location, there are lovely views from the home and it is surrounded by spacious gardens.

**01206 646646**  
**[healthcarehomes.co.uk](http://healthcarehomes.co.uk)**





# St Mary's Churchyard

## St Mary's Wins Wildlife Trust's Silver Award for Helping Nature

It's been two years since The Rev David Newton suggested that St Mary's could contribute to the *Caring for God's Acre* scheme by making the churchyard more nature friendly. One thing led to another and recently we put in for the *Wildlife Trust's Bronze Churchyard Conservation Award*.

A formal inspection by experts followed in mid-May and, to our amazement and delight, we were presented with a Silver Award! Not only that, but the judges also said *"if the current management plan continues, St Mary's churchyard will stand as a fine example of what we are trying to achieve in Cambridgeshire..."* They also picked out a number of plants of special interest including Hoary Plantain and Bugle, the latter becoming rare in the county.

*Developing hay meadow in the churchyard with clumps of Hoary Plantain (left) and Bugle (right)*



Our aim is to make the churchyard as environmentally friendly as possible whilst retaining the serene and timeless beauty of this lovely spot. On behalf of the St Mary's Church PCC, a small Steering Group supported by a team of volunteers manages the project, but we want to involve our village community too, from youngsters in youth organisations to nature-lovers studying the wider countryside.

One of the first things we did was prepare a digital map showing the churchyard's features. This is available online<sup>1</sup> and shows the zones established to resemble various types of meadow management that maximise plant and insect diversity, birds and mammals too.

We carried out a small mammal survey, catching several bank voles and a wood mouse, put up some nest boxes, built a splendid "bug basecamp" and have made a small watery spot near one of the downpipes from the church roof ... but there is so much more to do. We would love to hear from any naturalists in the village who are interested in recording the birds, plants and insects living in the churchyard.

We are setting up a baseline so that, over the years, we can monitor the changes and see how well we are doing. All records will contribute to the Cambourne-based Cambridgeshire and Peterborough Environmental Records Centre as well.

Why not join us in this endeavour, either through youth groups or as individual enthusiasts, please get in touch!

Mark Collins [collinsmark@gmail.com](mailto:collinsmark@gmail.com); Robert Cook [pandrcook2@gmail.com](mailto:pandrcook2@gmail.com)

<sup>1</sup> See <https://pghardy.net/comberton/map/index.html#highlight>

A Bank Vole  
about to be  
released after  
capture



# ANDREW EVANS

01954 780 999 – 01223 864335

email: [andrew@omegaclean.co.uk](mailto:andrew@omegaclean.co.uk) [www.omegaclean.co.uk](http://www.omegaclean.co.uk)

Family Business Since 1980

- ✓ Carpet Cleaning
- ✓ Upholstery Cleaning
- ✓ Tile & Grout Cleaning
- ✓ Leather Cleaning
- ✓ Oriental Rug Cleaning
- ✓ Carpet & Fabric Protection
- ✓ Allergy Relief Treatment
- ✓ Odour Eradication
- ✓ Stain Removal



From  
**£895\***  
for a fully  
fitted electric  
garage door.

WAS £1,354 INCLUDING VAT.

Gotta get a Garolla.



Garolla garage doors are expertly made to measure in our own UK factories, they're strong and solidly built. The electric Garolla door rolls up vertically, taking up only 8 inches inside your garage, maximising valuable space. Our expert local installers will fit your new door and they'll take away the old one too, so there's no mess.

Give us a call today and we'll come and measure up **FREE** of charge.

**GAROLLA**  
ROLLER  
SHUTTER  
DOORS

[www.garolla.co.uk](http://www.garolla.co.uk)

CALL US TODAY ON:

**01223 902 319**

MOBILE:

**07537 149 128**

**LINES OPEN 7 DAYS A WEEK**

\*Offer valid for openings up to 2.4m wide & including 2 remote controls, 55mm white slats, internal manual override.

## CHIMNEY SWEEP

07919 888990



Professional and insured  
Certificates issued  
Advice given and problems solved  
[edcleansweep@gmail.com](mailto:edcleansweep@gmail.com)  
Clean Sweep, based in Haslingfield





**Brand new purpose built site**  
 Flexible options for home and business  
 Monitored CCTV, gate entry by key fob

Easy access for removal company lorries - Entry from 06.00 to 22.00, 7 days a week  
 Insulated, damp free containers owned from new and carefully maintained  
 Over 10 years of experience - Friendly and family run  
 Website: [www.lawstorage.co.uk](http://www.lawstorage.co.uk) / Call: 01223 874629 / email: [paul@lawstorage.co.uk](mailto:paul@lawstorage.co.uk)  
Please note, we have moved to: Butts Farm, Malton Road, Orwell, SG8 5QR



Let us lighten your load



# ROBERT BRUCE

## ≈ RELOCATION ≈

**Robert's personal property finding service**

- Gives you extra help, support and local knowledge
- Takes the stress and hassle off your shoulders
- Tailored to your personal home search requirements



**WANTED: large family home on generous plot, price range £1m to £1.8m**

For an initial chat please call Robert on 07787 853475 or 01480 751105 or email [rb@robertbrucerelocation.co.uk](mailto:rb@robertbrucerelocation.co.uk)  
[www.robertbrucerelocation.co.uk](http://www.robertbrucerelocation.co.uk)



## Comberton Friendship Club

We would like to thank everyone who supported our stand at the Jubilee Celebrations. We had a Treasure Hunt to raise funds for the Arthur Rank Hospice Charity. The winner, who was to receive half the proceeds very kindly donated it back to us thus raising £110 for the charity. Thank you all so very much, also thanks to the club members who manned the stand for the whole day!!

Do come and give the friendship a try, our next meeting is on Thursday 14th July, 2.30pm in the Village Hall when our speaker will be Glenn Carter from The Bobby Scheme.

Sue Allin

# WS PLUMBING & HEATING

- FULL HEATING INSTALLATION
- BOILER SERVICES
- PLUMBING & HEATING REPAIRS
- BATHROOM INSTALLATION

**RELIABLE & FRIENDLY SERVICE ■ ALL WORK UNDERTAKEN**



CALL FOR A FREE QUOTE

**01954 212134 / 07834 562532**

## ASH CROFT VETS

### MAIN SURGERY

169 St Neots Road, Hardwick, CB23 7QJ - Tel: 01954 210250

### BRANCH SURGERY

Pendrill Court, Ermine Str, Papworth, CB23 3UY - Tel: 01480 831615

Consultations by Appointment Only

[www.ashcroftvet.co.uk](http://www.ashcroftvet.co.uk)



Specialists in  
made to  
measure window  
coverings

Beautifully made and locally produced  
Curtains and Roman Blinds

Suppliers of Sanderson, William Morris,  
Harlequin, Scion, Prestigious Textiles

Roller, Vertical, Pleated, Wood, PVC and  
Aluminium Venetian Blinds

Contemporary window dressings:

Vision/Duplex and Visage Blinds

Plantation shutters and Awnings

Experts in home automated motorised solutions

FREE - NO OBLIGATION QUOTES - FIND US AT

Sage Blinds & Interiors

Phillimore Garden Centre, Cambridge Road,  
Melbourn. SG8 6EY, Tel: 01763 263399

[www.sageblinds.co.uk](http://www.sageblinds.co.uk)

Open Mon- Fri 9am-5pm & Sat 9am-1pm



the footcare specialist

Providing expert treatment in all  
aspects of foot healthcare in  
the comfort of your own home

**Nail Cut • Callus • Athlete's Foot**

**Hard Skin • Corn Removal**

**Fungal Infections • Plantar Faciitis**

**In-Growing Toe Nail • Orthotics**

**Leg and Foot Massage**

To book your appointment call Andrina on

**07966 571 686**

or email: [andrinab@foot-care.co.uk](mailto:andrinab@foot-care.co.uk)

**[www.foot-care.co.uk](http://www.foot-care.co.uk)**

Andrina Baldock, Foot Health Practitioner, SAC Dip, FHPP FHPT  
Register for Foot Health Practitioners Member

## **Comberton Cinema**

Unfortunately we will not be able to hold the cinema in July. As we do not meet in August, our next film evening will be Wednesday 21<sup>st</sup> September when we hope to show 'Phantom of the Open' (no, not Phantom of the Opera!). We are hoping that new films will be coming available to show for later in the autumn.

The Village Hall Trustees

## **The Comberton Village Transport Help Scheme**

Last month we wrote explaining that as this scheme started about 40 years ago many of our original drivers are no longer available so we are desperately short of drivers. Each driver is reimbursed for petrol and is not asked to wait for long appointments such as Addenbrookes.

In response to our request last month we recruited one new driver.

This is an incredibly valuable scheme and many people benefit from it. Even to get to Comberton Surgery can be too far to walk if you are even slightly infirm. As an example in the month of April the Scheme provided lifts for 36 people consisting mainly of out-patient appointments and visits to Comberton and Bourn surgeries and in May the number was up to 43.

Under normal circumstances and with adequate drivers it is unlikely anyone would be asked more frequently than once or twice a month.

If you think you may be able to help or would like more details, without any obligation, please contact either:

Barbara Mitton	01223 262073
or	
Gill Redman	01223 262246



# ARNOLD & WILLIS CONSTRUCTION

☎ 07896089377

☎ 07805786426

✉ office@arnoldwillis.co.uk

🌐 arnoldwillis.co.uk

## Plumbing - *Ian Stonebridge* Your local plumber

Friendly, reliable service - No job too small  
Mob: 07866 278497 / Tel: 01223 263586



## PEST PROBLEM?

CALL DRE PEST CONTROL

01954 230708

07789 502556

- Commercial & Residential
- One-off Call Outs
- Management Contracts

Cambridge & surrounding areas  
drepestcontrol.co.uk



**DRE**   
Pest Control Limited

# THE CHALLENGE

## SPONSORED BY COSTCUTTER OF COMBERTON

Surf on the web to see the solution.....

The answers to the clues below form part of a group of 500,000 ! What is this a group ? The following 16 letters are the first of each answer, but NOT in the correct order:- OWSBFPCLMJYTRQJ.

1.....Surname of main character in Name of the Rose.

2.....J.S “JIM” ? American tennis player.

3.....The ? . A Peck/Wyman 1946 Film.

4..... F 1 ? Button.

5.....Jan Tschichold’s 1966/67 design.

6.....AKA Neve Haas Grotesk

7..... ? Le Coultre watch.

8.....Minimum attendance to validate a meeting.

9.....Rachel ? Enemy at the Gates actress.

10.....Centremost of 7 hills of Rome ( O not E ending ).

11.....Mick the ? Twice Greyhound Derby Winner.

12.....Round Indian flatbreads.

13.....KIA car model.

14.....AKA Leonard Hilton McGurr.

15.....Ancient native of Anatolia.

16.....Ancient Medieval Siege Engine eg LUDGAR

Entries please to the store no later than the 14<sup>th</sup> July. The prize of everything that’s naughty, wine and chocs, generously donated by Costcutter goes to the first correct entry out of the hat.

NAME/ADDRESS.....



MARK WEATHERHEAD LTD  
Ashworth House, St Neots Road,  
Hardwick, Cambs. CB23 7QL  
Tel: 01954 210355  
E Mail: sales@markweatherhead.co.uk  
Website: www.markweatherhead.co.uk

## Mark Weatherhead



SALES

SERVICE

PARTS

WE ALSO HIRE OUT :- AERATOR, SCARIFIER & TURF CUTTER

COME AND VISIT OUR SHOWROOM AND COUNTRY STORE IN HARDWICK CB23 7QL

## D.K.TILL & Son in Law

COAL AND SOLID FUEL MERCHANTS

Family run business for 40 years

Coal, Logs, Charcoal, Gas, Compost

TEL, 01223 232947 David Till - 07523044521 Kevin Crisp

Email, dktil@hotmai.co.uk



*More than just a service*



Heating



Plumbing



Renewables



Bathrooms

All Domestic & Commercial  
works undertaken



www.shelfordheating.co.uk

T: 01223 833426 E: sales@shelfordheating.co.uk

# TAXI

Fully Licensed, Fast  
Reliable Service,  
Competitive Prices

## TEL: 07919 368105

AIRPORT TRANSFERS  
LONG DISTANCE  
LOCAL PICKUP  
ADVANCED BOOKINGS







# Meridian Primary School

*Learning for life – striving for excellence*

Greetings Neighbours,

We had a fantastic time celebrating the Queen's Jubilee. The children looked wonderful in non-uniform/party clothes and their crowns. Children made portraits of the Queen and many of these are displayed around the school. The Year 5 and 6 classes prepared afternoon tea for the whole school and the children were presented with Jubilee coins.

In sport our netball teams have done us proud – our Y6 netball B team did well in the South Cambridgeshire School Sport Partnership Bee Netball Competition and our A team came 6th out of 200 schools in the county, playing at the county Finals.

We'd like to say a big thank you to Comberton Squash Club for welcoming our Y4 children to taster sessions over four weeks in May. The children had lots of fun and thoroughly enjoyed taking part.

We have been excited about our sports week and sports day on our calendar - an event that has not happened for two years! We welcomed parents to this event and our local pre-school. During sports week, we had local sports clubs join our school and lead workshops e.g. triathlon team; tri-golf team and cricket coaches.

We are looking forward to STEM week (Science, Technology, Engineering, Mathematics).

The PTA have been busy organising events at the school – we had a really popular disco in May and on the last Sunday in June they organised a 2k Fun Run around the school field and recreation ground.

We are always seeking local volunteers who have a wealth of experiences and knowledge on some of our subjects or topics (unit topics can be found on our website). Please do enquire if you are keen to volunteer on a regular basis. All regular volunteers will need DBS clearance.

Wishing you all a lovely summer.

Kind regards,

Mrs C. Etchie

Headteacher

# Comberton Village Hall Lettings Charges

	Private Individuals		Community Groups *		Community Commercial	
	Comberton Residents	Non-Residents	Affiliated	Non-Affiliated	Local/Non-Franchised	Non-Local/Franchised
<b>SESSION</b>	Main Hall		Main Hall		Main Hall	
Daytime	£20	£30	£15	£25	£35	£40
Weekday eve.	£35	£45	£15	£25	£35	£45
Weekend eve.	£65	£75	£15	£25	£130	£150
	Meeting Room		Meeting Room		Meeting Room	
All sessions	£15	£20	£15	£20	£25	£27.50
	Community Room		Community Room		Community Room	
All sessions	£12.50	£17.50	£12.50	£17.50	£22.50	£25

Unless otherwise stated, charges are per session. Sessions are 9am to 1pm, 2pm to 5:30pm and 6pm to 10:30pm (midnight on Fri/Sat/Sun).

A refundable deposit of £50 is required at the time of booking.

Prices for commercial lettings and weddings are available on request.

\*Additional information for groups:

- Affiliated Community groups holding evening group social or fundraising events will be charged the residents evening rates. Non-affiliated groups holding similar events will be charged the non-residents evening rates.
- Groups working with children and/or vulnerable adults will need to have child protection and vulnerable adult policies & procedures in place.
- Annual affiliation fee of £10 is due on 1<sup>st</sup> January.

More information, including hall availability, can be found at [www.combertonvillagehall.org](http://www.combertonvillagehall.org)

To make a booking contact the Village Hall Administrator, Janice Sutton at [combertonvillagehall@gmail.com](mailto:combertonvillagehall@gmail.com) or on 07435 324408 (9am to 9pm).

Please note that this is a part-time role carried out around my job. If I am unable to answer your call please leave a message and I will phone you back, or send me an email.

Printed by  
**Victoire Press**  
 9-10 Viking Way, CB23 8EL. 01954 781919



The  
Form  
Practice

**A complementary health practice with a difference**



Here at The Form Practice, we believe in whole health. Whether you book a session of osteopathy, K-Laser, physiotherapy or Pilates, you can be sure that our integrated and collaborative team of practitioners will work together to provide a personalised treatment plan that addresses every aspect of your health.

**[www.theformpractice.com](http://www.theformpractice.com)**  
**[info@theformpractice.com](mailto:info@theformpractice.com)**  
**01954 214473**

**Main Street**  
**Hardwick**  
**CB23 7QS**



